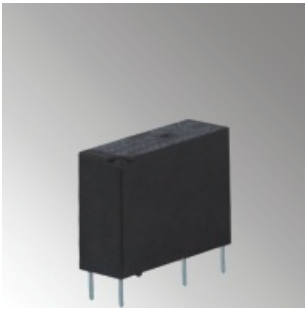


PCB RELAY



AS46F

Contact specification

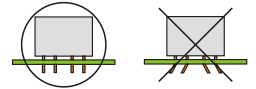
Contact form	1H
Contact resistance	≤ 100mΩ (1A6VDC)
Contact material	AgCdO AgNi AgSnO ₂
Contact capacity(resistance)	5A 250VAC/30VDC



AS46F

Technical specification

Insulation resistance	≥ 1000MΩ (500VDC)
Dielectric strength	Between coil and contact ≥ 4000VAC 1min
	Between open contacts ≥ 1000VAC 1min
Operate / Release time	≤ 10ms
Terminal type	PCB mounting



Coil specification

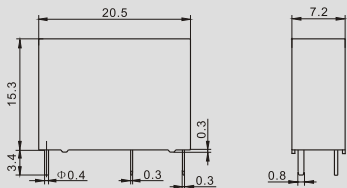
Rated coil power	200mW
------------------	-------

Coil data

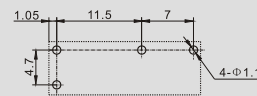
Nominal voltage	Operate voltage	Release voltage	Coil resistance
VDC	VDC	VDC	Ω ± 10%
3	2.25	0.18	45
5	3.75	0.25	125
6	4.50	0.30	180
9	6.75	0.45	405
12	9.00	0.60	720
18	13.5	0.90	1620
24	18.0	1.20	2880

Outline dimension、Mounting holes (Bottom view)、Wiring diagram (Bottom view)

AS46F Outline dimension



AS46F Mounting holes (Bottom view)



AS46F Wiring diagram (Bottom view)

