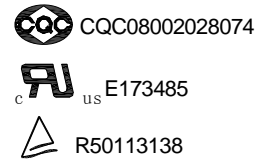


PCB	TRA2F
------------	--------------

- 16A switching capabilities
- 5KV dielectric strength between coil to contacts
- 10KV surge voltage between coil to contacts
- Meet requirements of 8mm creepage distance
- Class B/F available
- Conform to RoHS,ELV directive


ORDERING CODE

<u>TRA2F</u> — <u>12VDC</u> — <u>H</u> <u>IT</u> 1 2 3 4	
1. Relay Model 2. Coil Nominal Voltage 5,6,9,12,18,24,48VDC 3. 触点转换形式 H: Form A	4. GWIT IT: 750°C (at 2 s) Nil: 标准

COIL DATA at 20°C)

Nominal Voltage (VDC)	5	6	9	12	18	24	48	0.54W
Coil Resistance ($\Omega \pm 10\%$)	46	67	150	270	620	1050	4250	
Rated Current (mA)	108	90	60	45	29	22.5	11.3	
Max Operate Voltage (VDC)	4	4.8	7.2	9.6	14.4	19.2	38.4	
Min Release Voltage (VDC)	0.5	0.6	0.9	1.2	1.8	2.4	4.8	
Max Applicable Voltage 最大过载电压	85°C时额定电压的160%							

CONTACT DATA

Contact Form	1H
Contact Material	Silver Alloy
The thickness of Silver Alloy Contact	$\geq 0.3\text{mm}$
Load	Resistive load(COS $\Phi=1$)
Contact Ratings	16A 250VAC 20A 125VAC 16A 30VDC
Minimum load	-----
Max Switching Voltage	277VAC/30VDC
Max Switching Current	20A
Max Switching Power	-----
Contact Resistance	50m Ω Max at 6VDC 1A
Life Expectancy	Electrical : 100, 000 Operations(at30Operations/minute)
	Mechanical : 10, 000, 000 Operations(at300Operations/minute)

■ CHARACTERISTICS DATA

Insulation Resistance	1000M Ω Min at 500VDC
Dielectric Strength Between Open Contacts	1000VAC(for one minute)
Between Contacts and coil	5000VAC(for one minute)
Operate Time	7.2ms \pm 1.5ms
Release Time	5ms Max
Temperature Range	-40°C to +85°C (no freezing)
Shock Resistance	Operating Extremes : 10G 11ms
	Damage Limits : 100G 6ms
Vibration Resistance	10-55Hz, 1.5mm
Max. switching frequency	Mechanical: 18,000 operations/hr
	Electrical: 1,800 operations/hr
Humidity	40-85%
Weight	Approx 15g
Safety Standard	UL cUL TÜV CQC

■ APPROVED STANDARDS

Model()	Coiling rating	Safety Standard	Contact rating
TRA2F	5 to 48VDC	TUV	16A 250VAC 16A 30VDC
		UL&CUL	20A 125VAC
		CQC	16A 250VAC

■ OVERALL AND MOUNTING DIMENSIONS

