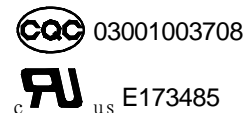


**TRAF**

- Ideal for motor switching in appliances and HVAC
- 20A switching capability
- Designed for high inrush compressor loads
- Semi-sealed construction
- Sealed version available
- Conform to RoHS,ELV directive



30.5×16.0×23.5


**ORDERING CODE**

<u>TRAF</u>	—	<u>12VDC</u>	—	<u>S</u>	—	<u>H</u>
1		2		3		4
1. Relay Model				4.		H: Form A
2. Coil Nominal Voltage						
3. S: Sealed						

**COIL DATA** at 20°C)

Nominal Voltage (VDC)	5	6	12	24	48	0.9W
Coil Resistance ( $\Omega \pm 10\%$ )	28	40	160	640	2560	
Rated Current (mA)	180	150	75	37.5	18.75	
Max Operate Voltage (VDC)	3.75	4.5	9	18	36	
Min Release Voltage (VDC)	0.5	0.6	1.2	2.4	4.8	
Max Applicable Voltage	70	130%, 23		170%		

**CONTACT DATA**

Contact Form	1H
Contact Material	Silver Alloy
Load	Resistive load(COS $\Phi=1$ )
Contact Ratings	20A 250VAC
Minimum load	100mA 5VDC
Max Switching Voltage	250VAC
Max Switching Current	20A
Max Switching Power	5000VA
Contact Resistance	100m $\Omega$ Max at 6VDC 1A
Life Expectancy	Electrical : 100,000 Operations(at30Operations/minute)
	Mechanical : 10,000,000 Operations(at300Operations/minute)

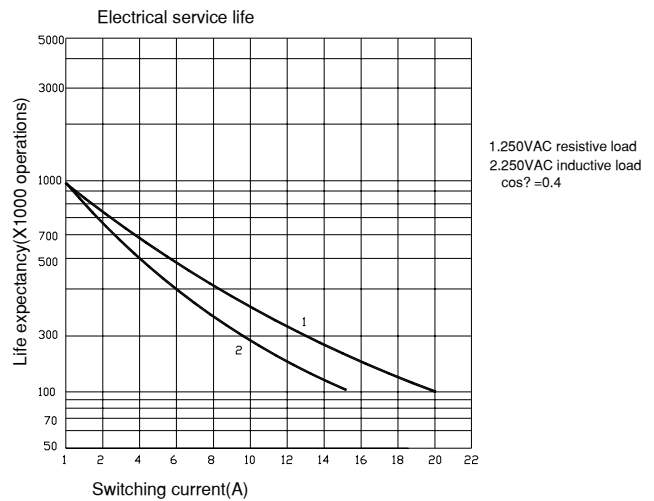
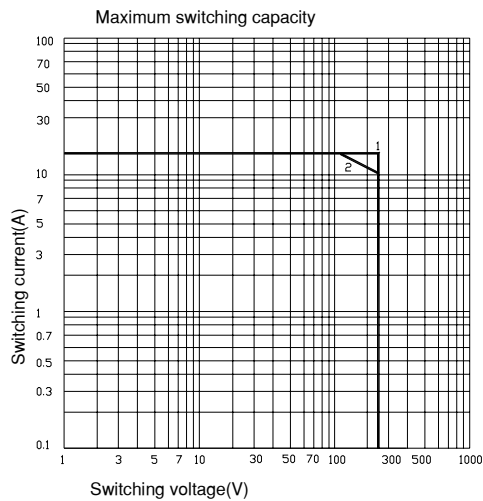
## ■ CHARACTERISTICS DATA

Insulation Resistance	100M $\Omega$ Min at 500VDC
Dielectric Strength Between Open Contacts	1500VAC(for one minute)
Between Contacts and coil	4500VAC(for one minute)
Operate Time	20ms
Release Time	10ms
Temperature Range	-25°C to +55°C
Shock Resistance	Operating Extremes : 20G
	Damage Limits : 100G
Vibration Resistance	10-55Hz, 1.5mm
Max. switching frequency	Mechanical: 18,000operations/hr
	Electrical: 1,800operations/hr
Humidity	40-85%
Weight	Approx 23g
Safety Standard	UL cUL CQC

## ■ APPROVED STANDARDS

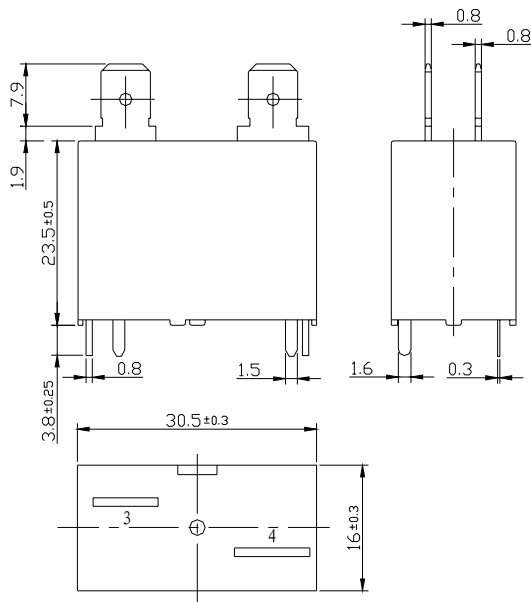
Model	Coiling rating	Safety Standard	Contact rating
TRAF	5 to 48VDC	UL/cUL	20A 250VAC
		CQC	20A 250VAC

## ■ ENGINEERING DATA

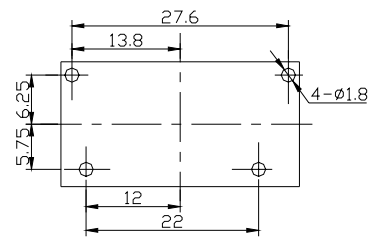


■ OVERALL AND MOUNTING DIMENSIONS

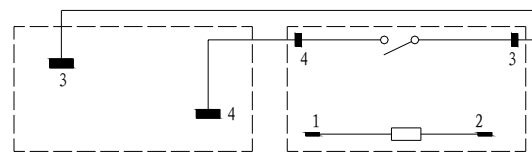
TRAF-H



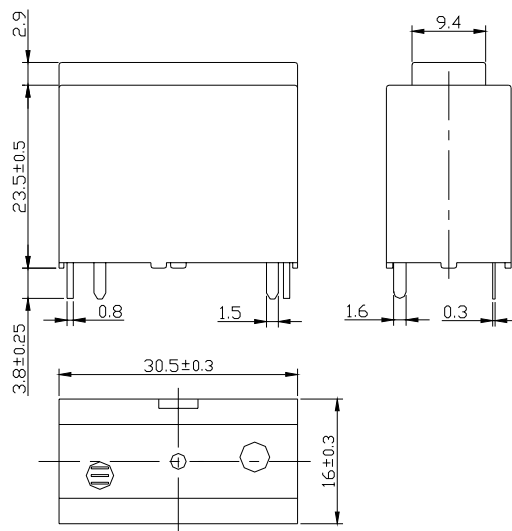
Bottom terminals



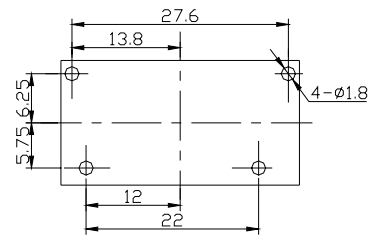
Terminal arrangement



TRAF-H-P



Bottom terminals



Terminal arrangement

