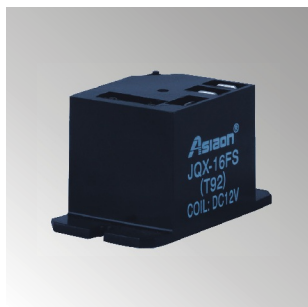


PCB RELAY



JQX-16FS/T92

Contact specification

Contact form	1Z, 1H, 1D
Contact resistance	$\leq 100\text{m}\Omega$ (1A 6VDC)
Contact material	AgCdO AgSnO ₂
Contact capacity	NO: 30A 240VAC/28VDC NC: 20A 240VAC/28VDC

Coil specification

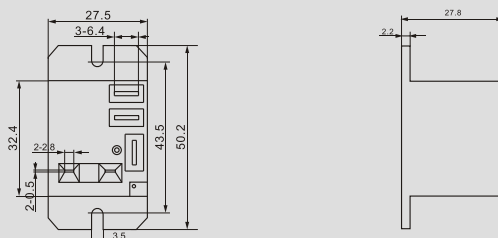
Rated coil power	DC 0.9W
------------------	---------

Coil data

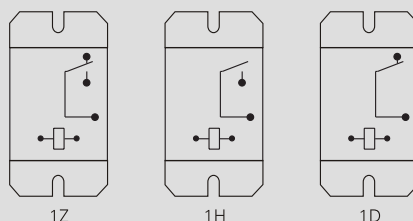
Nominal voltage VDC	Operate voltage VDC	Release voltage VDC	Coil resistance $\Omega \pm 10\%$
5	3.75	0.5	30
6	4.5	0.6	45
9	6.75	0.9	100
12	9.0	1.2	160
15	11.25	1.5	260
18	13.5	1.8	385
24	18.0	2.4	660
48	36.0	4.8	2560
70	52.5	7.0	5500
110	82.5	11	13450

Outline dimension、Mounting holes (Bottom view)、Wiring diagram (Bottom view)

JQX-16FS/T92 Outline dimension



JQX-16FS/T92 Wiring diagram (Bottom view)



JQX-16FS/T92

Technical specification

Insulation resistance	$\geq 1000\text{M}\Omega$ (500VDC)
Dielectric strength	Between coil and contact $\geq 2500\text{VAC}$ 1min
	Between open contacts $\geq 1500\text{VAC}$ 1min
Operate / Release time	$\leq 15\text{ms}/10\text{ms}$
Terminal type	PCB and quick terminal mounting

