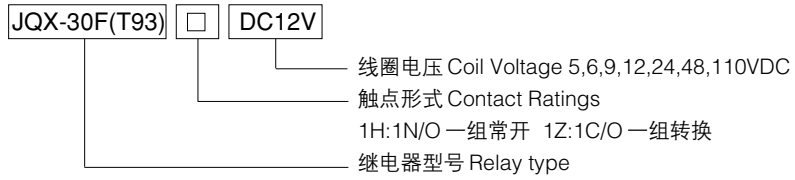


**特性 Features**

- 30A 触点切换能力
- 标准印制板引出脚
- 30A Carrying Current
- Standard PC Layout

电路板式继电器 PCB Relay



**触点参数 Contact Ratings**

触点形式 Contact Ratings	1H	1D	Z(NC)	1Z(NC)
接触电阻 Contact Resistance	20mΩ(在额定负载下测量)			
触点材料 Contact Material	银合金 Silver Alloy			
触点负载(阻性)Contact capacity	1H:30A 240VAC/28VDC 1D:15A240VAC/28VDC 1Z: 20A240VAC/28VDC			

**性能参数 Specification**

绝缘电阻 Insulation Resistance	100MΩ.500VDC		
介质耐压 Dielectric Strength	线圈与触点间 BCC	2500V	1分钟 1min
	断开触点间 BOC	1500V	1分钟 1min
动作时间 Operate Time	15ms/10ms		
引出端方式 Terminal Type	印制板引出端 PCB		

**线圈参数 Coil Ratings**

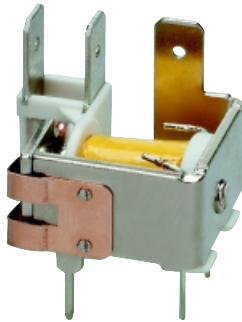
额定线圈功率 Nominal Coil Power	DC: 0.9W
---------------------------	----------

**线圈规格表 Coil Versions**

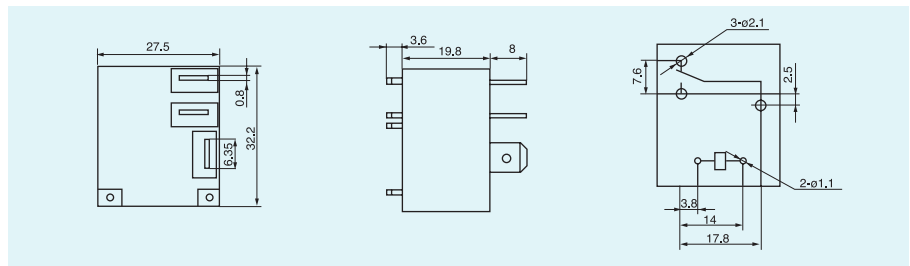
额定电压 Nominal Voltage VDC	吸合电压 Pull-in VoltageVDC	释放电压 Release VoltageVDC	线圈电阻 Coil Resistance Ω: ±10%
5	3.75	0.5	27
6	4.50	0.6	40
9	6.75	0.9	97
12	9.00	1.2	155
15	11.25	1.5	256
18	13.50	1.8	380
24	18.00	2.1	660
48	36.00	4.8	2560
70	52.50	7.0	5500
110	82.50	11.0	13450



JQX-30F(T93)



**外形图、接线图、安装孔尺寸 Dimension.Bottom View**



**性能曲线图 Reference Data**

