

# 835



## »» Features

- Miniature 12A 125VAC, 10A 250VAC/30VDC PCB Relay.
- UL/CUL, CSA, TUV, VDE approved.
- 450mW and 200mW coil are available.
- Optional for high CTI 250 plastic material (E version) and VDE approved type.
- Comply with RoHS-Directive 2002/95/EC.

## »» Type List

### ◆ 835

Terminal style	Contact form	Insulation system	Designation (provided with)		
			Flux tight	Sealed type	Sealed type washable
PCB terminal	1A (SPNO)	-----	835-1A-C	835-1A-V	835-1A-S
		F	835-1A-F-C	835-1A-F-V	835-1A-F-S

### ◆ 835L

PCB terminal	1A (SPNO)	-----	835L-1A-C	835L-1A-V	835L-1A-S
		F	835L-1A-F-C	835L-1A-F-V	835L-1A-F-S

### ◆ 835NL

PCB terminal	1A (SPNO)	-----	835NL-1A-C	835NL-1A-V	835NL-1A-S
		F	835NL-1A-F-C	835NL-1A-F-V	835NL-1A-F-S

## »» Ordering Information

835   - 1A -  - C   
 1 2 3 4 5 6 7

- |                                    |                           |
|------------------------------------|---------------------------|
| 1. 835 -- Basic series designation | 5. Blank -- Standard type |
|                                    | F -- Class F              |
| 2. Blank -- Standard type          |                           |
| N -- High sensitivity type         | 6. C -- Flux tight        |
|                                    | V -- Sealed type          |
| 3. Blank -- Standard type          | S -- Sealed type washable |
| L -- Low power type                |                           |
| 4. 1A -- Single pole normally open | 7. Blank -- Standard type |
|                                    | E -- CTI 250V             |

## »» Contact Rating

Type	835	835L	835NL
Resistive load	10A 240VAC 12A 120VAC (※)	8A 240VAC	5A 240VAC 8A 240VAC (※)

## »» Coil Rating (DC)

## ◆ 835 / 835L

Rated voltage (V)	Rated current $\pm 10\%$ at 23°C (mA)	Coil resistance $\pm 10\%$ at 23°C ( $\Omega$ )	Max. continuous voltage at 85°C	Pick up voltage(Max) at 23°C	Drop out voltage(Min) at 23°C	Power consumption at rated voltage
3	150	20	160 % of rated voltage	75 % of rated voltage	5 % of rated voltage	approx. 0.45W
5	90.9	55				
6	75	80				
9	50	180				
12	37.5	320				
18	25	720				
24	18.8	1280				

## ◆ 835NL

Rated voltage (V)	Rated current $\pm 10\%$ at 23°C (mA)	Coil resistance $\pm 10\%$ at 23°C ( $\Omega$ )	Max. continuous voltage at 85°C	Pick up voltage(Max) at 23°C	Drop out voltage(Min) at 23°C	Power consumption at rated voltage
3	66.7	45	160 % of rated voltage	80 % of rated voltage	5 % of rated voltage	approx. 0.2W
5	40.0	125				
6	33.3	180				
9	22.2	405				
12	16.7	720				
18	11.1	1620				
24	8.3	2880				

## »» Specification

Contact material	AgSnO / AgNi alloy	
Contact resistance <sup>(1)</sup>	100m $\Omega$ Max. (1A/6VDC by 4 pipes m $\Omega$ meter)	
Operate time <sup>(1)</sup>	10ms Max.	
Release time <sup>(1)</sup>	5ms Max. (for 835)	
	7ms Max. (for 835L/NL)	
Insulation resistance <sup>(1)</sup>	100M $\Omega$ Min. (DC 500V)	
Dielectric strength <sup>(1)</sup>	Between open contact	: AC 1000V , 50/60Hz 1 min. (for 835) : AC 750V , 50/60Hz 1 min. (for 835L/NL)
	Between contact and coil	: AC 2500V , 50/60Hz 1 min.
Vibration resistance	Operating extremes	10~50Hz , amplitude 1.0 mm
	Damage limits	10~50Hz , amplitude 1.0 mm

# 835

Shock resistance	Operating extremes	10G
	Damage limits	100G
Life expectancy	Mechanical	10,000,000 operations (frequency 18,000 operations/hr)
	Electrical	100,000 operations (※) 30,000 ops. (for 835/835NL) (frequency 900 operations/hr)
Operating ambient temperature	-40 ~ +85 °C (no freezing)	
Weight	Approx. 6 g	

Note : (1) initial value

## »» Safety Approval

Certified	UL/CUL	CSA	TUV	VDE
File No.	E74321	1474283	R9552647	40010643

## »» Safety Approval Rating

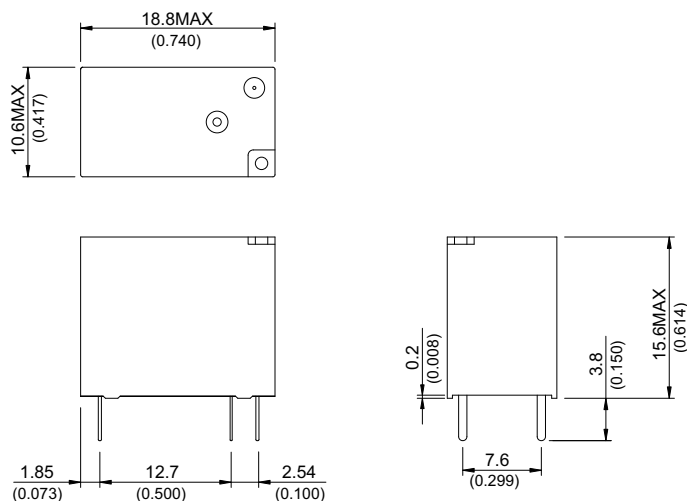
### ◆ 835

UL/CUL	CSA	TUV	VDE
12A 125VAC 10A 277VAC/30VDC TV-5	12A 125VAC 10A 277VAC/30VDC	12A 125VAC 10A 277VAC/30VDC	10A 250VAC T85 4A 400VAC T85

### ◆ 835L/835NL

UL / CUL	VDE
8A 277VAC 10A 125VAC 8A 30VDC	8A 250VAC T85 4A 400VAC T85

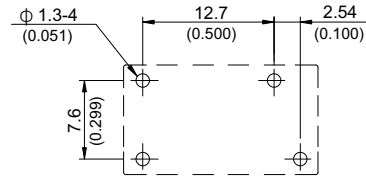
## »» Outline Dimensions



## »» Wiring Diagram BOTTOM VIEW



## »» PC Board Layout BOTTOM VIEW



## »» Engineering Data

