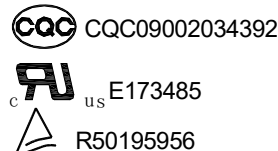
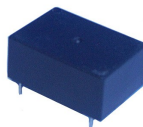




<h1>PCB 继电器</h1>	<h1>TRCD</h1>
------------------	---------------

- Sub-miniature dimensions: 23×16.1×10.2 (L×W×H)
- High-sensitivity models available with low power consumption (200 mW)
- Conform to RoHS,ELV directive



### ORDERING CODE 订购代码

<u>TRCD</u>	<u>L</u>	—	<u>12VDC</u>	—	<u>S</u>	—	<u>H</u>	<u>F</u> / <u>xx</u>
1	2		3		4		5	6 7
1. Relay Model 继电器型号 TRCD or TRCDF							5. 触点转换形式 H: Form A	
2. Coil Power 线圈功率 L=0.2W, D=0.36W, N=0.45W							6. 环境温度 F:+105°C; Nil: +85°C	
3. Coil Nominal Voltage 线圈额定电压 3,5,6,9,12,24,48VDC							7. 特殊代码 IT: GWIT 灼热丝 750°C (at ≤ 2 s)	
4. S: Sealed 密封 Nil: Vented(Flux-tight) 防焊剂型							Nil: Standard Type 标准	

### COIL DATA 线圈参数 (at 20°C)

Nominal Voltage 额定电压(VDC)	3	5	6	9	12	24	48	
Coil Resistance 线圈阻值(Ω ±10%)	45	125	180	405	720	2880	11520	0.2W
Rated Current 额定电流(mA)	66.7	40	33.3	22.2	16.7	8.3	4.2	
Max Operate Voltage 最大吸合电压(VDC)	2.25	3.75	4.5	6.75	9	18	36	
Min Release Voltage 最小释放电压(VDC)	0.15	0.25	0.3	0.45	0.6	1.2	2.4	
Coil Resistance 线圈阻值(Ω ±10%)	25	69	100	225	400	1600	6400	0.36W
Rated Current 额定电流(mA)	120	72	60	40	30	15	7.5	
Max Operate Voltage 最大吸合电压(VDC)	2.25	3.75	4.5	6.75	9	18	36	
Min Release Voltage 最小释放电压(VDC)	0.15	0.25	0.3	0.45	0.6	1.2	2.4	
Coil Resistance 线圈阻值(Ω ±10%)	20	56	80	180	320	1280	5120	0.45W
Rated Current 额定电流(mA)	150	90	75	50	37.5	18.7	9.4	
Max Operate Voltage 最大吸合电压(VDC)	2.25	3.75	4.5	6.75	9	18	36	
Min Release Voltage 最小释放电压(VDC)	0.15	0.25	0.3	0.45	0.6	1.2	2.4	
Max Applicable Voltage 最大过载电压	70°C时额定电压的130%, 23°C时额定电压的170%							

### CONTACT DATA 触点参数

Contact Form 触点形式	1H
Contact Material 触点材料	Silver Alloy
Load 负载	Resistive load(COS Φ=1)
Contact Ratings 触点负载	16A 250VAC (TUV) 10A 250VAC/24VDC 1/2HP 125VAC TV-5A @125VAC(LAMP) 10A 125VAC(Tungsten)
Minimum load 最小负载	100mA 5VDC
Max Switching Voltage 最大转换电压	250VAC/125VDC
Max Switching Current 最大转换电流	16A
Max Switching Power 最大转换功率	4000VA/480W
Contact Resistance 接触电阻	100m Ω Max at 6VDC 1A
Life Expectancy 寿命	Electrical 电气寿命: 100,000 Operations(at30Operations/minute)
	Mechanical 机械寿命: 10,000,000 Operations(at3000Operations/minute)

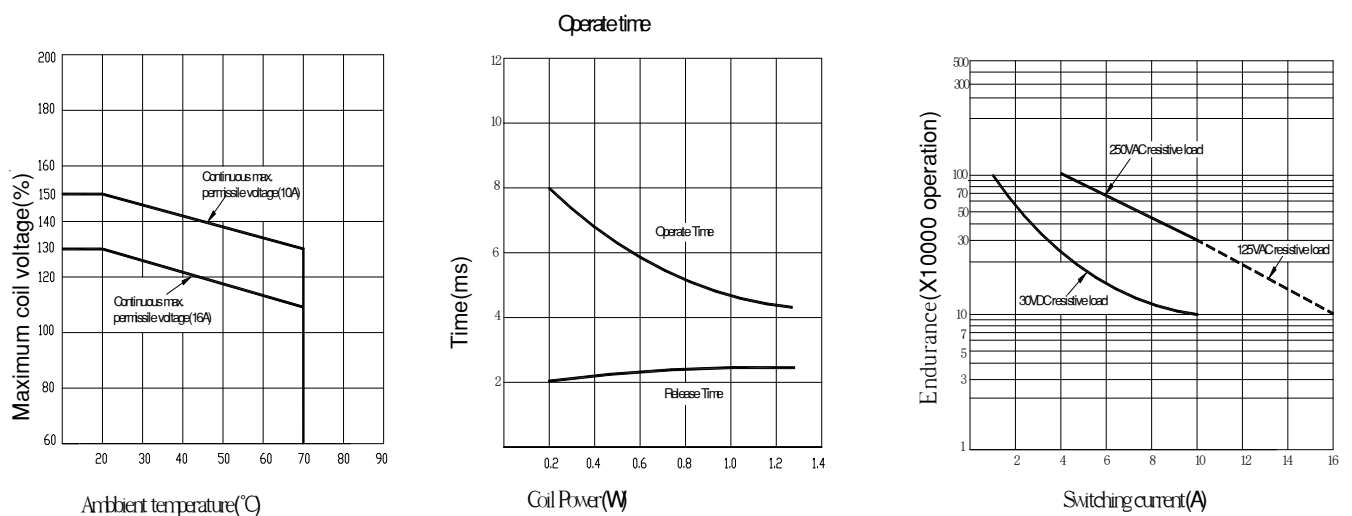
## ■ CHARACTERISTICS DATA 性能参数

Insulation Resistance绝缘阻值	100MΩ Min at 500VDC
Dielectric Strength Between Open Contacts触点间耐压	750VAC(for one minute)
Between Contacts and coil触点与线圈间耐压	2500VAC(for one minute)
Operate Time吸合时间	15ms
Release Time释放时间	8ms
Temperature Range环境温度	-40°C to +85°C (F: +105°C)
Shock Resistance冲击	Operating Extremes动作极限: 10G
	Damage Limits破坏极限: 100G
Vibration Resistance振动	10-55Hz, 1.5mm
Max. switching frequency最大转换频率	Mechanical: 18,000operations/hr
	Electrical: 1,800operations/hr
Humidity湿度	20-85%
Weight重量	Approx 8g
Safety Standard安全标准	UL、cUL、TÜV、CQC

## ■ APPROVED STANDARDS 安全标准

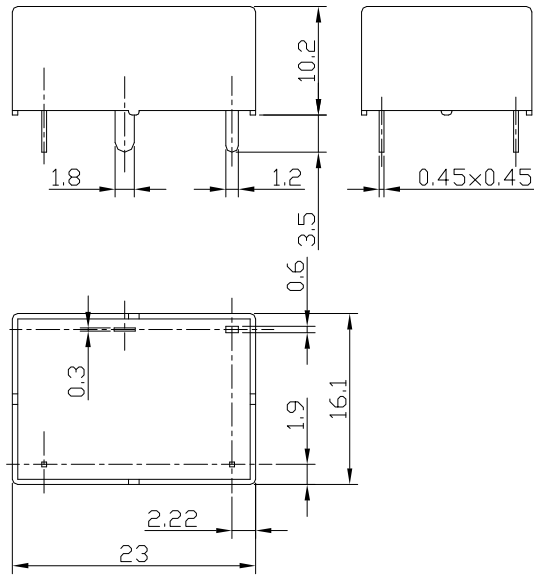
Model(型号)	Coiling rating (线圈电压)	Safety Standard (安全标准)	Contact rating (触点负载)
TRCD or TRCDF	3 to 48VDC	TÜV	16A 250VAC 10A 250VAC 10A 24VDC
		UL/cUL	10A 250VAC 1/2HP 125VAC TV-5A @125VAC (LAMP) 10A 125VAC(Tungsten) 15A 125VAC 1HP 277VAC
		CQC	10A 250VAC

## ■ ENGINEERING DATA 设计参数

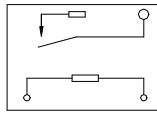


## ■ OVERALL AND MOUNTING DIMENSIONS 安装图

### Outline dimensions

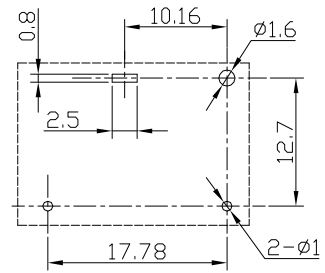


### Wiring Diagrams



(Bottom View)

### PC Board Layouts(Bottom View)



- 备注：1) 产品部分外形尺寸中未注尺寸公差：当外形尺寸 $\leq 1\text{mm}$ 时，公差为 $\pm 0.2\text{mm}$ ；当外形尺寸在 $1\sim 5\text{mm}$ 时，公差为 $\pm 0.3\text{mm}$ ；  
当外形尺寸 $> 5\text{mm}$ 时，公差为 $\pm 0.4\text{mm}$ 。  
2) 安装孔尺寸中未注尺寸公差均为 $\pm 0.1\text{mm}$ 。

### 声明：

本产品规格书仅供客户使用时参考，如有更改，恕不另行通知。