

### Main Feature:

- Socket with screw terminal.
- No reduction of protection class or creepage/clearance with plastic retainer.
- Easy replacement of relays.
- Retainer clip with ejection function for relays of 16, 20 or 25mm height.
- Socket can be used as connector for diagnosis function.
- Sockets and accessories: RoHS compliance (Directive 2002/95/EC).

Socket with screw-type terminal for DIN-rail mounting  
Approvals:



E306487

### Accessories:

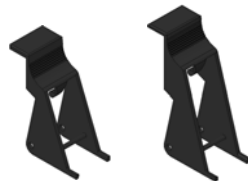
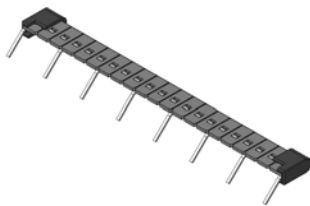
LED Module:



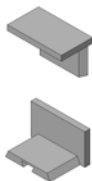
Grip:



Jump Link:



Writing Tab:



### Technical data:

Rated current	12A
Rated voltage / max. Switching voltage AC	300 VAC
Dielectric strength coil-contact circuit	4,000 V <sub>rms</sub>
Clearance / creepage coil-contact circuit	≥ 8/8mm
Material group of insulation parts	≥ IIIa
Insulation to IEC 60664-1	
Type of insulation coil-contact circuit	basic
Open contact circuit	functional
Rated insulation voltage	250V
Pollution degree	2
Rated voltage system	230/400V
Over voltage category	III
RoHS Directive 2002/95/EC	
Sockets, retainers and marking tag:	compliant
Degree of protection DIN 40050	IP20
Ambient temperature range	-25...+70°C
Terminals	screw
Terminal screw torque acc. IEC 61984	0.5Nm
Max.	0.7Nm
Wire cross section	
Single wire	2X2.5mm <sup>2</sup>
Fine wire	2x2.5mm <sup>2</sup>
With bootlace crimp (DIN 46228/1)	2x1.5mm <sup>2</sup>
Insertion cycles	A (10)
Max. Insertion Force total	100N
Mounting distance	0, dense packing
Weight	34g
Packaging unit	20 pcs.

### Order Information:

**CSR - S 35 F3 - □**

①

②

③

④

⑤

① Item:	CSR
② Contact form:	P (for PCB Terminal) S (for Screw Type) C (for Cage Clamp Type)
③ Terminal Pitch:	35 (for 3.5mm Terminal Pitch) 50 (for 5.0mm Terminal Pitch)
④ Insulation levels:	F2 (for Two Levels) F3 (for Three Levels)
⑤ Special remark:	Nil (for Standard) T (for Tyco LED Module) R (for Level Function Different)

### Dimension:

