



Main Feature:

- Socket with cage clamp terminal.
- No reduction of protection class or creepage/clearance with plastic retainer.
- Easy replacement of relays.
- Retainer clip with ejection function for relays of 16, 20 or 25mm height.
- Socket can be used as connector for diagnosis function.
- Sockets and accessories: RoHS compliance (Directive 2002/95/EC).

Socket with cage clamp-type terminal for DIN-rail mounting
Approvals:



E306487

2347925

Accessories:

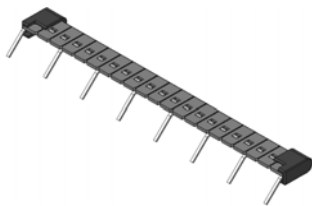
LED Module:



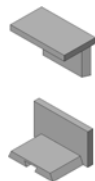
Grip:



Jump Link:



Writing Tab:



Technical data:

Rated current	12A
Rated voltage / max. Switching voltage AC	300 VAC
Dielectric strength coil-contact circuit	4,000 V _{rms}
Clearance / creepage coil-contact circuit	≧ 8/8mm
Material group of insulation parts	≧ IIIa
Insulation to IEC 60664-1	
Type of insulation coil-contact circuit	basic
Open contact circuit	functional
Rated insulation voltage	250V
Pollution degree	2
Rated voltage system	230/400V
Over voltage category	III
RoHS Directive 2002/95/EC	
Sockets, retainers and marking tag:	compliant
Degree of protection DIN 40050	IP20
Ambient temperature range	-25...+70°C
Terminals	cage clamp
Wire strip length	7mm
Max wire size	
Solid wire	2x(0.2...1.5)mm ²
Stranded wire	2x(0.2...1.5)mm ²
Insertion cycles	A (10)
Max. Insertion Force total	-
Mounting distance	0, dense packing
Weight	45g
Packaging unit	20 pcs.

Order Information:

CSR - C 50 F3 - □

① ② ③ ④ ⑤

①	Item:	CSR
②	Contact form:	P (for PCB Terminal) S (for Screw Type) C (for Cage Clamp Type)
③	Terminal Pitch:	35 (for 3.5mm Terminal Pitch) 50 (for 5.0mm Terminal Pitch)
④	Insulation levels:	F2 (for Two Levels) F3 (for Three Levels)
⑤	Special remark:	Nil (for Standard) T (for Tyco LED Module) R (for Level Function Different)

Dimension:

